



MEASUREMENTS MADE EASY

Use this guide as a tool to help collect basic information so you and your designer can start the new kitchen process.

Accurate measurements of your kitchen floor plan is key in designing your new cabinet layout. Be sure to show exact locations of doors, windows, hood vents, exhaust, gas lines, water line, drain line, outlets, switches, light fixtures, and heat vents.

If you want to use the attached graph paper, that's great. If not, then all we need is your drawing. We're here to help **including FREE in home measurements** please call **267-875-3626** with any questions.



STEP 1: KITCHEN SHAPE

Draw your kitchen as a box showing all the walls that you think will have cabinets. See the example on the bottom of the next page. Be sure to include any major structural features or obstacles that may alter or impede your cabinet design placement.



STEP 2: DRAW YOUR DESIGN

Mark any openings such as windows and doorways. Be sure to include radiators or other obstacles that affect where cabinets can be installed. Now, label all the openings in your kitchen.



STEP 3: MEASUREMENT TIME

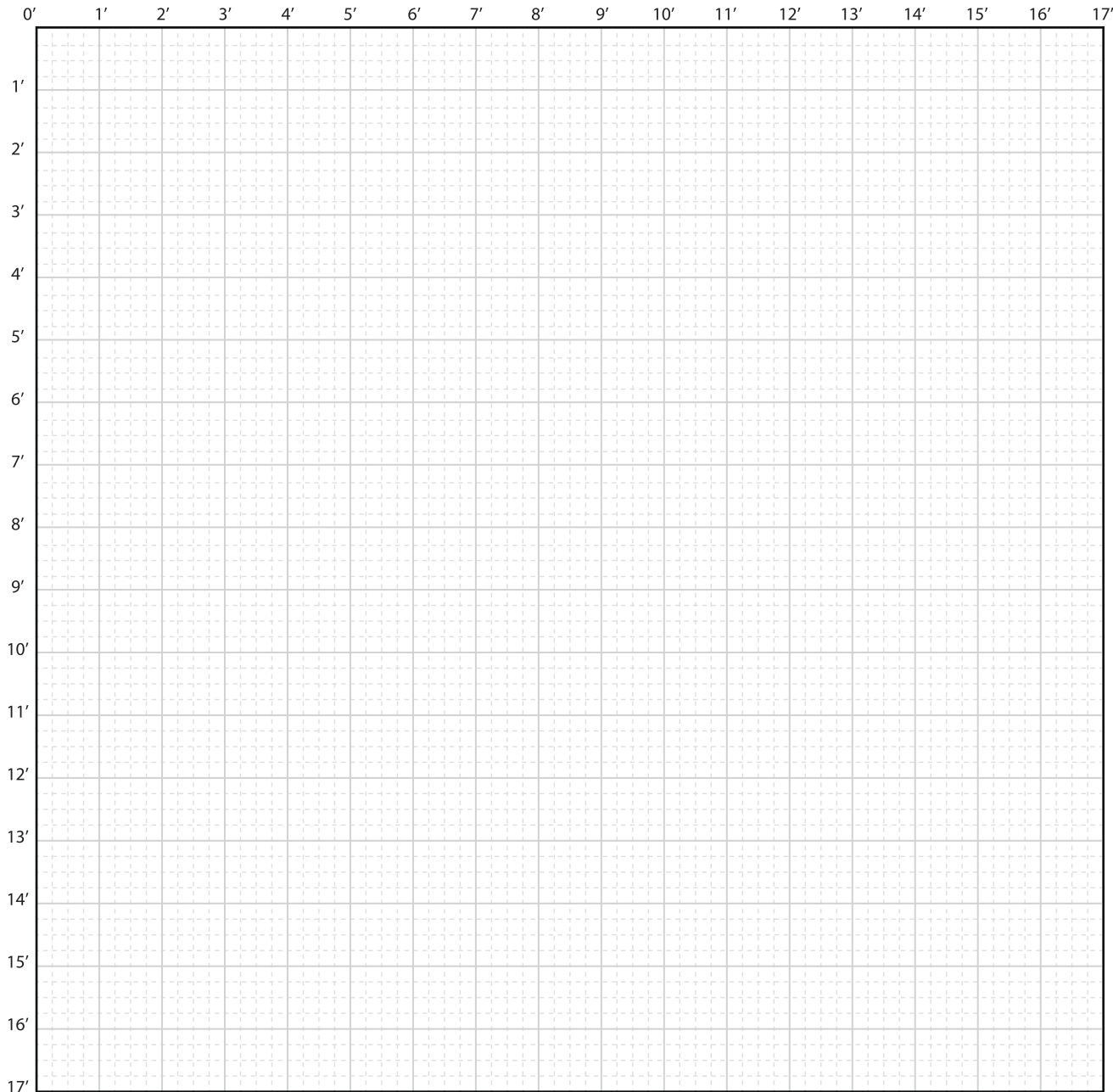
Break out that tape measure and measure all the openings, from outside edge to outside edge, and add them to your drawing. It's ok to round to the nearest inch.

***Double check your measurements.**

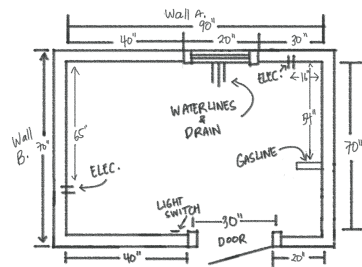


STEP 4: ADD APPLIANCES

Most people already have a good idea of where the major appliances will go in their kitchen. Feel free to draw your ideas of what you would like and include the placement of your sink and appliances. Use the checklist to the right as a guide.



**Each large square represents 1 sq. ft. and the small squares are 3".*



HINT

Your completed floor plan should resemble this diagram.



HINT

Want to really assist your designer? Include 'before' pictures along with your measurements.



APPLIANCE CHECKLIST

REFRIGERATOR:

- FRENCH DOOR/SIDE-BY-SIDE
- SEPARATE FREEZER UNIT
- RIGHT HINGE LEFT HINGE
- COUNTER DEPTH FULL DEPTH
- BUILT-IN FRIDGE
- CABINET DOOR PANEL REQUIRED

APPROXIMATE WIDTH: _____

REFRIGERATOR BRAND & MODEL #: _____

DISHWASHER:

- STANDARD ADA HEIGHT
- CABINET DOOR PANEL REQUIRED

APPROXIMATE WIDTH: _____

DISHWASHER BRAND & MODEL #: _____

HOOD:

- CHIMNEY/FREE-STANDING
- UNDER-CABINET
- WOOD HOOD INSERT
- PULL-OUT

APPROXIMATE WIDTH: _____

HOOD BRAND & MODEL #: _____

ANY OTHER BUILT-IN APPLIANCES

(or if you are having two of any of the above):

BRAND & MODEL #: _____